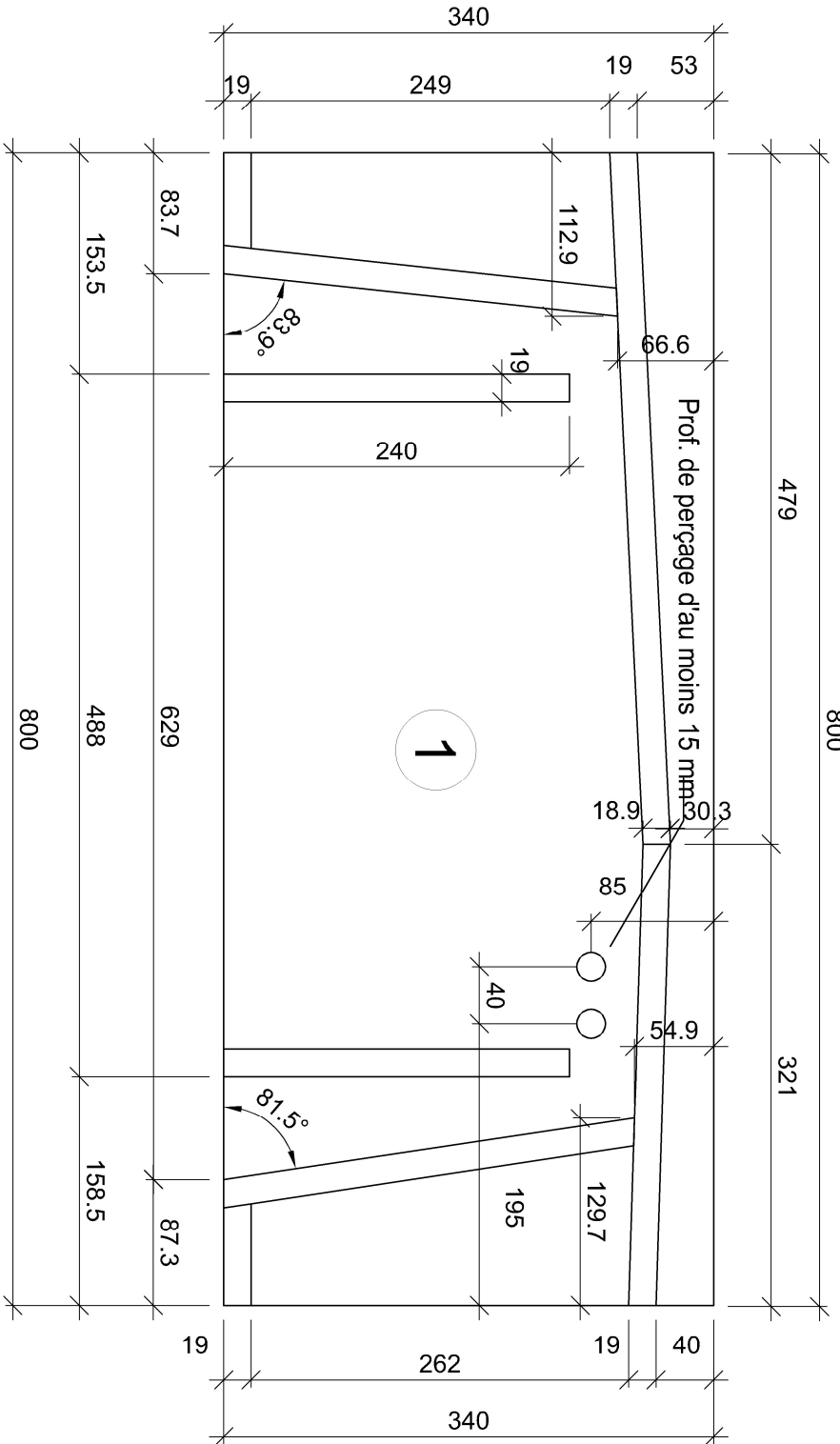


Maquette d'ajustage

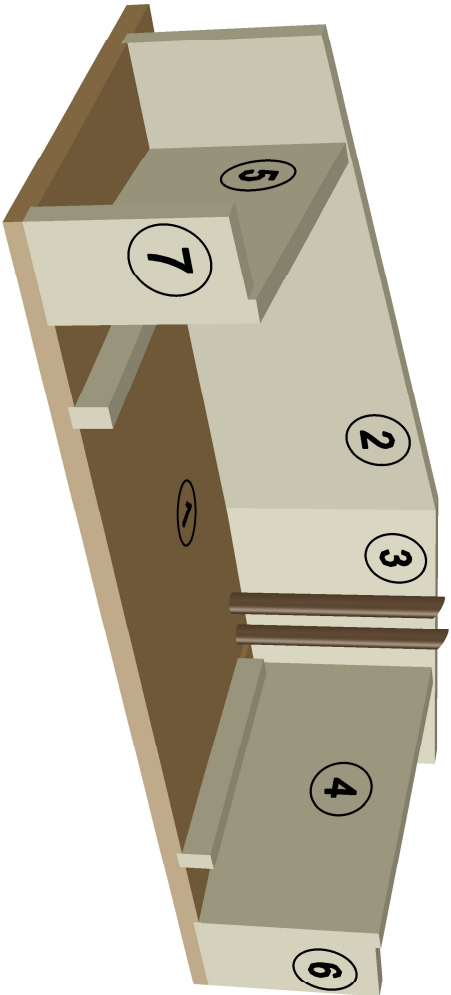
Liste de matériaux	Mat.	Pce	Long.	Larg.	Ep.
Fond 1	MDF	1	800	340	19
Dos gauche 2	MDF	1	<u>481.5</u>	<u>200</u>	19
Dos droite 3	MDF	1	<u>320.7</u>	<u>200</u>	19
Coté 4	MDF	1	<u>291</u>	<u>180</u>	19
Coté 5	MDF	1	<u>277</u>	<u>165</u>	19
Face 6	MDF	1	<u>160</u>	<u>70.5</u>	19
Face 7	MDF	1	<u>145</u>	<u>66.3</u>	19
Recharge	MDF	2	240	25	19
Tourillons Ø 20	HET	2	210		

Plan de fabrication conventionnel

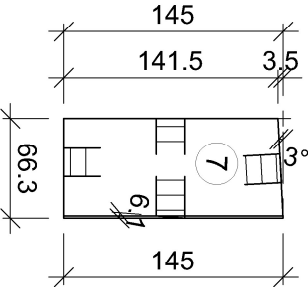
Vue de dessus



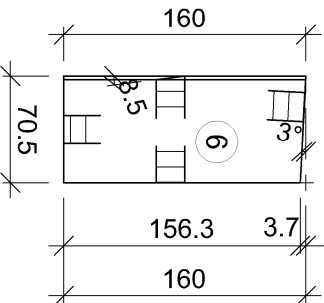
Uniquement pour la préparation interne.



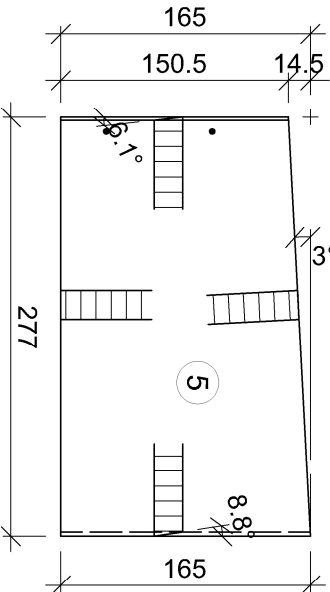
Face gauche



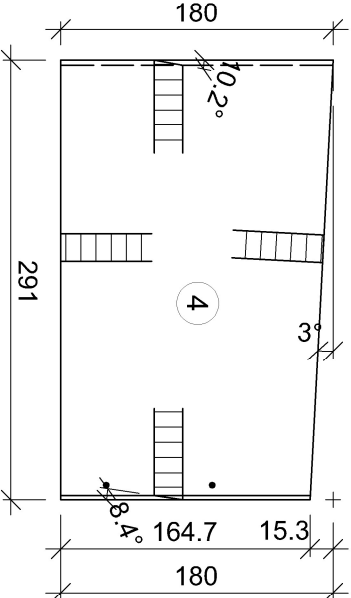
Face droite



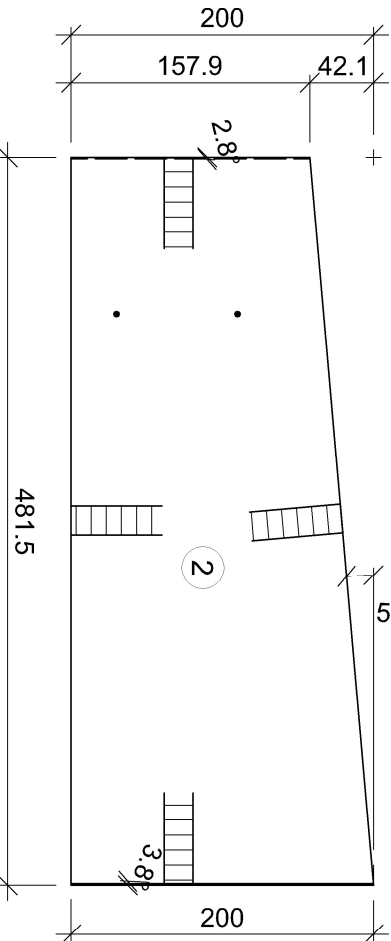
Coté gauche



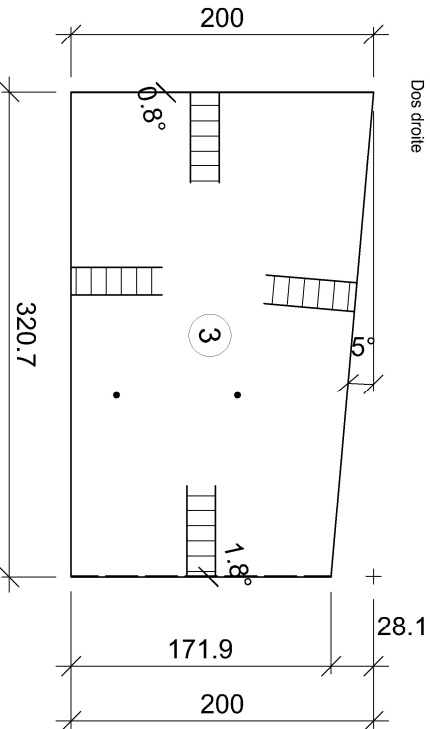
Coté droite



Dos gauche



Dos droite



2

Travail pratique

FRANCE

DES ENTREPRISES

DE CHARPENTE

ET DE MENUISERIE

Plan no.:

21_P.2.Préparation

Echelle:

1:5

Format:

420 x 297 / A3

Date:

11.03.2021

Auteur:

as - oc